


## AILSG's International Centre of Equi-T & Inclusion for Transformation (ICEQUI-T)

With deep commitment towards the empowerment of disadvantaged populations, AILSG looks at its field actions with them not just with constrained project mode, but has developed its own programs and innovations. It has entrusted its International Centre of Equity & Inclusion for Transformation [ICEQUI-T] the explicit performance indicator of 'number of lives improved'. AILSG through its ICEQUI-T synergizes with social sensitivities of various stakeholders, such as Corporates through its Corporate Social Responsibility Centre.




### MY Actions for SDGs- Social Impact Series


**Sharing of Insights, Learnings & Wisdom by Esteemed Speakers**

---


Launching the Series at the hands of  
**Hon'ble Director General Dr. Jairaj Phatak**




**MY SDG 8**  
Building Capacities of Youth as Enablers for SDG 8



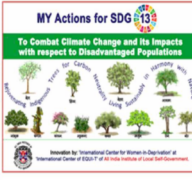
**MY Actions for SDG 3**  
To Enable Mental Health for All with focus on Disadvantaged and Youth




**MY Actions for SDG 5**  
To Advance Gender Equality & Empower All Women and Girls with focus on Disadvantaged Women and Girls



**MY Actions for SDG 6**  
To Enable Sustainable Management of Water and Sanitation with Participation of Local Communities



**MY Actions for SDG 13**  
To Combat Climate Change and its Impacts with respect to Disadvantaged Populations



**MY SDG 2: End Hunger & Malnutrition**  
(Movement of Youth for Sustainable Development Goal 2)

---

**Mr. Ranjit S. Chavan**  
President, AILSG

**Dr. Jairaj Phatak**  
Director General, AILSG

**Conceptualised and Organized by:**

**Prof. Dr. Mukesh Kanaskar**  
Dy. Director General, AILSG &  
Director, AILSG's International Center of EQUI-T  
& AILSG's CSR Center

**Shweta Gupta**  
Executive Director,  
AILSG's International Center of EQUI-T  
& AILSG's CSR Center

## Salient Achievements

Lives improved during the year 2022-23: Through the grassroots field actions of AILSG's ICEQUI-T & its sub-centers, AILSG has enabled improvement in the lives 0.8 million under-privileged populations with special focus on women & children from rural, tribal & urban areas.

### Social Innovations to address diverse development issues on ground:

On 10th August 2022, AILSG's following key innovation were launched at the hands of its Hon'ble- President Mr. Ranjit Chavan, Director General Dr. Jairaj Phatak, the AILSG Governing Council members, in the presence of the innovators {Distinguished Prof. Dr. Mukesh Kanaskar [Dy. Director General, AILSG and Director, AILSG's CSR Centre] and Ms. Shweta Gupta, Executive Director, AILSG's CSR Centre] along with the ICEQUI-T Team members:

- MY Actions for SDG 5: to achieve Gender Equality and Empower All Women and Girls with focus on Disadvantaged Women & Girls.
- MY Actions for SDG 3: to enable Mental Health for All with focus on Disadvantaged and Youth.
- MY Actions for SDG 6: to enable Sustainable Management of Water & Sanitation with Participation of Local Communities.



### Life Sills Innovation

AIILSG's launched its life skills innovation- Life SEF [Life Skills Education with Fun] at the hands of its Director General in the remote Siddi tribal field action area in Uttar Kannada district of Karnataka. A crucial feature of this innovation is that it is highly customized to the context of various disadvantaged populations.



### Financial Literacy Innovation

The Financial Literacy innovation of AIILSG was launched at the hands of the Director General, AIILSG Dr. Jairaj Phatak on 25th February 2023. The event was held in AIILSG's remote tribal field action area in Karjat taluka of Raigad district. A salient feature is that the innovation takes a Life-Cycle Approach relatable by disadvantaged communities through visual IEC understandable even by semi-literates and children.





## **AILLSG'S Own Pioneering Initiatives and Contributions to Sustainable Development Goals through ICEQUI-T & its Sub-centers**

- The text below elucidates the AILLSG's illustrative projects and programs anchored at its ICEQUI-T, especially those fostering global innovations which will have significant impact on furthering the SDGs with the disadvantaged populations.
- The focus here is explicitly on disadvantaged as AILLSG believes that an important test of progress towards the SDGs is the impact created with the disadvantaged.
- While AILLSG works with a wider gamut of the SDGs as presented in the table below, the current text focusses on some of them due to space considerations.
- Moreover, projects working with AILLSG's holistic development model [e.g. TARFAH for tribal and rural development] encompass many of the development interventions.
- They are taken further, manifested into concrete grassroots field actions benefitting more than 0.8 million [8 lakh] disadvantaged populations.

AILLSG's projects and programs towards attainment of these SDGs are anchored around its innovative model- TARFAH ["Transformative Actions for Rural Development, Food Security, Agriculture & Health"]. Its recent and ongoing projects based on this innovation include:

Five projects supported by TATA Rallis CSR in tribal areas of Raigad district of Maharashtra, Palghar district of Maharashtra, Narmada district of Gujarat, and non-tribal areas in Karim Nagar and Warangal districts of Telangana

- One project supported TATA Industries CSR in Raigad district of Maharashtra
- One project supported by German organisations- Terra Tech and Aktion Deutschland Hilft- with nomadic tribes in Beed district of Maharashtra
- One project supported by HDFC CSR through which a Kaushalya Vikas Kendra is established in Mumbai for honing skills of slum dweller youth of Mumbai

While detailing for each of these projects is customized to the respective local context, the key driving fundamental tenets for tribal & rural development projects of the TARFAH model common for them are as below:

### **The TARFAH Model**

- TARFAH, an indigenous musical instrument, aligns interventions with tribal and rural groups' cultural preferences.
- The TARFAH model focuses on food security and livelihood issues holistically, gender-sensitively, and combines long-term sustainability with short-term goals.
- The program focuses on improving agriculture for landholder families and providing livestock interventions for landless families to address short-term food security issues in impoverished tribal communities.
- Market analysis expands income sources through participatory interventions like floriculture and vegetable cultivation, utilizing community inputs and agricultural sciences' technological assistance.

- The "Mano-Swasthya Ranjan Kendras" initiative, funded by MUFG CSR, aims to provide long-term mental health support to 10,000 underprivileged kids, half of whom are women.

Transformative Actions for Rural Development, Food Security, Agriculture & Health, or TARFAH, is the innovative model that serves as the foundation for all of AILSG's projects and programs aimed at achieving these SDGs. Based on this innovation, its recent and ongoing projects include:

- Five projects supported by TATA Rallis CSR in tribal areas of Raigad district of Maharashtra, Palghar district of Maharashtra, Narmada district of Gujarat, and non-tribal areas in Karim Nagar and Warangal districts of Telangana
- One project supported TATA Industries CSR in Raigad district of Maharashtra
- One project supported by German organisations- Terra Tech and Aktion Deutschland Hilft- with nomadic tribes in Beed district of Maharashtra
- One project supported by HDFC CSR through which a Kaushalya Vikas Kendra is established in Mumbai for honing skills of slum dweller youth of Mumbai

While detailing for each of these projects is customized to the respective local context, the key driving fundamental tenets for tribal & rural development projects of the TARFAH model common for them are as below:



## The TARFAH model of AILSG:

The indigenous populations' traditional musical instrument is the source of the word "TARFAH." Because of their proximity to natural resources, the tribal and rural populations have cultural preferences that are in line with the interventions thanks to innovation. The TARFAH model recognizes the special significance of the local problems (and thus the solutions), custom-designs solutions, and implements them through community participation—as opposed to superficially importing alien interventions from an urban perspective. As a deliberate, well-thought-out process, it creates sustainability mechanisms that take up the development mantle from AILSG. The strategy is based on the micro-planning processes that start at the family and hamlet levels and eventually converge at the village level.



The TARFAH model takes a comprehensive and gender-sensitive approach to addressing the issues of food security and livelihood. It is a specially blended set of longer-term sustainability enabler interventions with shorter-term food security goals, tailored to the specific agro-ecological conditions. The ability of the tribes to significantly improve their natural resources by turning their "wastelands" into fruitful orchards and by conserving soil and water is a key component of the TARFAH model. This supports the local primary sector, which in turn helps to develop the secondary and tertiary sectors, opening up more options for landless people and marginal landholders to make a living—either directly through the addition of value to the primary produce or indirectly through increased local purchasing power.

The activities of 1) For landholder families: improved agriculture, improving crop productivity, cropping intensity & enriching cropping pattern, vegetable cultivation; & 2) For landless families: appropriate livestock interventions, such as poultry and Rural Non-Farm Sector interventions, are used to address the short-term food security issues with the extremely impoverished tribal people. Through appropriate horticultural interventions by landholder families and livestock & RNFS interventions by the landless, this innovation addresses the issues over the long term. Appropriate measures to conserve water and soil bolster the horticultural endeavors. Given that a large number of tribal and rural populations experience severe water scarcity beginning in December, one of the first tasks that is essential for community mobilization is the development of water resources.

The domain of livelihood options is diversified in accordance with regular market scanning. In addition to the technological support from the agricultural sciences, interventions such as floriculture and the cultivation of various types of vegetables are decided upon in a participatory manner with the community, for which strong forward linkages are established. Additionally, AILSG improves the relationship between the impoverished tribal and rural communities and government services through Panchayati Raj Institutions.

### SDG 3: Good Health & Well Being

This theme is covered as an in-built constituent of all the projects. Moreover the following project had this as a dedicated focus-

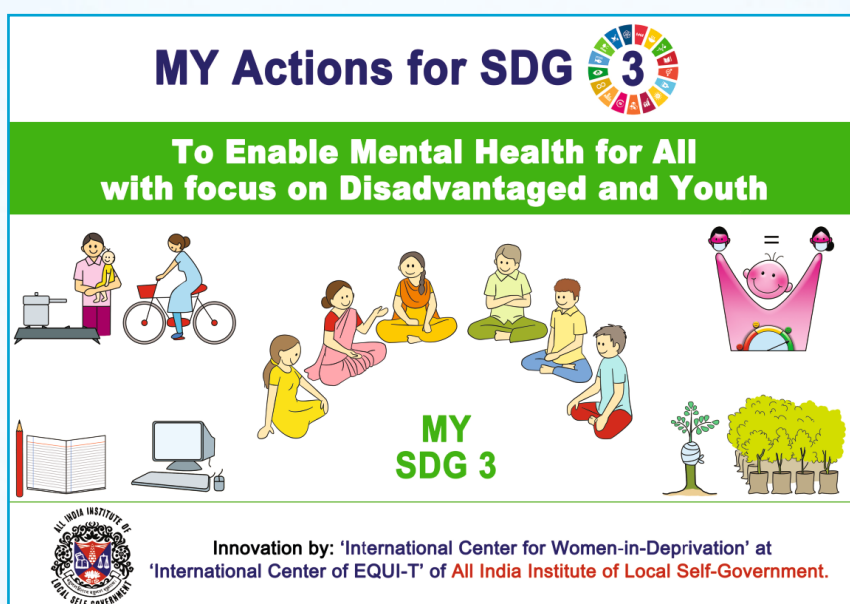
- MUFG CSR supported project dedicated to enabling sustainable mental health support to 10,000 marginalized youth, minimum 50% of which were women

Mental health, a previously overlooked aspect of health, has emerged as a shadow pandemic in recent years. Furthermore, the impact of gender-based violence, women's reproductive health, and women's mental health is frequently overlooked and continues to be so. The key aspect of Mental Health is the 'stigma and taboo' that surrounds it. There is also a scarcity of mental health services and approaches that are community-centric, socio-culturally sensitive, gender inclusive, and youth-friendly, making it more accessible and acceptable to youth and enabling youth participation and ownership.



MUFG Bank Ltd. supported the initiative of 'Mano-Swasthya Ranjan Kendras' within the community. CSR addressed this by involving 10,000 marginalized 'Youth', including indigenous 'Siddi Tribes' of African origin who face high stigma and discrimination, Scheduled-tribes, and marginalized youth from urban slums in Maharashtra, Delhi, Tamil Nadu, and Karnataka.

Concerns have been raised about the nutritional status of disadvantaged children and women. AILSG responds to this by expanding its MAMTA (Movement against Malnutrition for Transformative Actions) movement to include many more organizations. This entails enabling the planting of nutritious kitchen gardens with location-specific vegetables and herbs. This was supplemented by the development of AILSG's herbal garden innovation, which included three sub-types.





## SDG 4: Quality Education

While this theme is covered as an in-built constituent of all the projects, certain recent projects had this as a dedicated focus, which include one project each supported by the:

- MUFG Bank CSR at 140 slum locations in Mumbai, Chennai, Delhi and Bengaluru
- National Stock Exchange Foundation in 51 villages in Nandurbar district of Maharashtra
- HDFC Bank CSR at 40 tribal locations in Palghar district of Maharashtra
- Kotak Mahindra Bank CSR in 4 Schools of Ratnagiri district in Maharashtra, 2 schools of Sehore district in Madhya Pradesh and 4 schools in Davangere district of Karnataka
- EagleBurgmann CSR in 1 slum location in Pune
- Kalpataru Foundation, USA in 1 slum location in Pune



AIILSG-ICEQUI-T's 'Children Resource Centers', also known as 'Shikshan Ranjan Kendras', offer quality education to underprivileged children in urban, rural, tribal, and denotified areas, despite COVID-19 disruptions.

AIILSG is also undertaking improvement in school infrastructure along with establishment of E-Classes in schools attended by children from disadvantaged communities.



## SDG 5: Gender Equality

AIILSG promotes gender equality through women-anchored livelihoods, women-headed families, community participation, and technology adoption. They prioritize Indigenous women's mental health and reproductive health, assisting over 5000 disadvantaged women.



## SDG 6 – Clean Water and Sanitation

AIILSG's ICEQUI-T innovations enable disadvantaged populations to self-assess, plan, and seek stakeholder participation in community improvement through simple visual tools, even for illiterates.



## MY Actions for SDG 6

### To Enable Sustainable Management of Water and Sanitation with Participation of Local Communities



Gender Sensitive Self- Assessment and Planning by Disadvantaged Populations : for Water, Sanitation, Hygiene & Environment									
WASH Factors	Ranking the Current Status	Disaggregation: Women's Ranking	Disaggregation: Men's Ranking	Disaggregation: Children's Ranking	Setting the Target for Improving the Current Status	Timeline to achieve the set Target	Actions Planned		
							No Community	With Community	With Others
<b>A. Water Management</b>									
1. Access to Safe Drinking Water									
2. Access to Sanitation									
3. Access to Hygiene									
<b>B. Safe Sanitation &amp; Drainage</b>									
4. Access to Safe Sanitation									
5. Access to Safe Drainage									





## SDG 13: Climate Action

AIIISG is implementing climate action innovations, including community self-assessment and planning with women's participation for disaster risk reduction, and a HDFC Bank Corporate Social Responsibility tree plantation drive for carbon neutrality, as well as "rejuvenating indigenous trees for carbon neutrality."

## My (Mentoring Youth For) actions for SDGs Social Impact Series

AIIISG is implementing initiatives to address disadvantaged issues, including mentoring youth for SDG actions. The MY Actions for SDGs initiative, led by President Shri. Ranjit Chavan and Director General Dr. Jairaj Phatak, aims to provide insights from renowned social changemakers and their social impacts, benefiting over 300 youth from seven countries.



## Conscious promotion of Sports among Under-Privileged

AIIISG's consciously promotes sports among under-privileged populations as strategy for physical well-being as well as towards improving mental health through de-stressing. A crucial aspect is equal emphasis on sports for girls.



## Concern for differently abled

High sensitivity and special focus for actions for empowerment of differently abled is another crucial aspect of AIIISG's work. It supports the needy candidates with necessary resources and equipments along with facilitation support for their growth.

**अखिल भारतीय स्थानिक स्वराज्य संस्था व एचडीएफसी बैंक अंतर्गत अपंग व कर्णबधिर मुलांना साहित्य वितरण व लोकार्पण सोहोळा संपन्न**

जव्वर : अखिल भारतीय स्थानिक स्वराज्य संस्था व एचडीएफसी बैंक परिवर्तन यांच्या अंतर्गत अपंग व कर्णबधिर मुलांना साहित्य वितरण व लोकार्पण सोहोळाचे आयोजन केले होते. जव्वर, मोखाडा, विक्रमगड, इंदूर, रातुख्यात येणाऱ्या शिक्षण व रोजगार केंद्रातील अपंग व कर्णबधिर मुलांसाठी साहित्य वितरण सोहोळा आयोजित केला होता.

या कार्यक्रमाद्वारे केंद्रात येणाऱ्या अपंग मुलांना वहीसहजर एचडीएफसी बैंक परिवर्तन सोपसआर प्रमुख योगेश पगारे, अखिल भारतीय स्थानिक स्वराज्य संस्थेच्या संचालक स्वाती सोनावणे, तसेच डेमाचीनेट गावाचे उपसरचंच बोरेसे, जयेश्वर विद्या मंदिर शाळेचे भोरे, शाळा व्यवस्थापन समितीच्या उपाध्यक्षा चंद्रकला कडु, सर्व शिक्षण अभियान वंद्यात समिती जव्वरचे मजमन येमडे, पुजारी यांच्या हस्ते वाटप करण्यात आली. तसेच कानाचे मशीनेचे वाटप करण्यात आले. या नंतर लोकार्पण सोहोळा करण्यात आली. केंद्रातील मुलांनी स्वागत गीत, पद्यनाट्य आणि पारंपारिक शोभा वाडक्यात आली. या नंतर जव्वर तालुक्यातील २२ गावातील सरचंच, उपसरचंच शाळेचे शिक्षकवर्ग, पालकवर्ग यांचे स्वागत करण्यात आले. तसेच प्रत्येकाचे आपले मनोगत व्यक्त केले. योगेश पगारे यांच्या हस्ते गावातील सरचंच, यांनी सवीचे आभार वकन कार्यक्रमाची सांगता करण्यात आली.

**अपंग मुलांना साहित्याचे वाटप करताना.**

शैक्षणिक साहित्य, लायाबरीचे पुस्तके देऊन शिक्षण व रोजगार केंद्रातील सर्व साहित्य ग्रामपंचायत अंतर्गत विविध परिषद शाळेला सुपूर्त करण्यात आले व योगेश पगारे यांना ग्रामपंचायतीने आभार पत्र देण्यात आले. योगेश पगारे यांनी गावकऱ्यांशी आपले मनोगत व्यक्त केले. त्यानंतर शिक्षण मित्र प्रमोद शेंडे यांनी सवीचे आभार वकन कार्यक्रमाची सांगता करण्यात आली.